

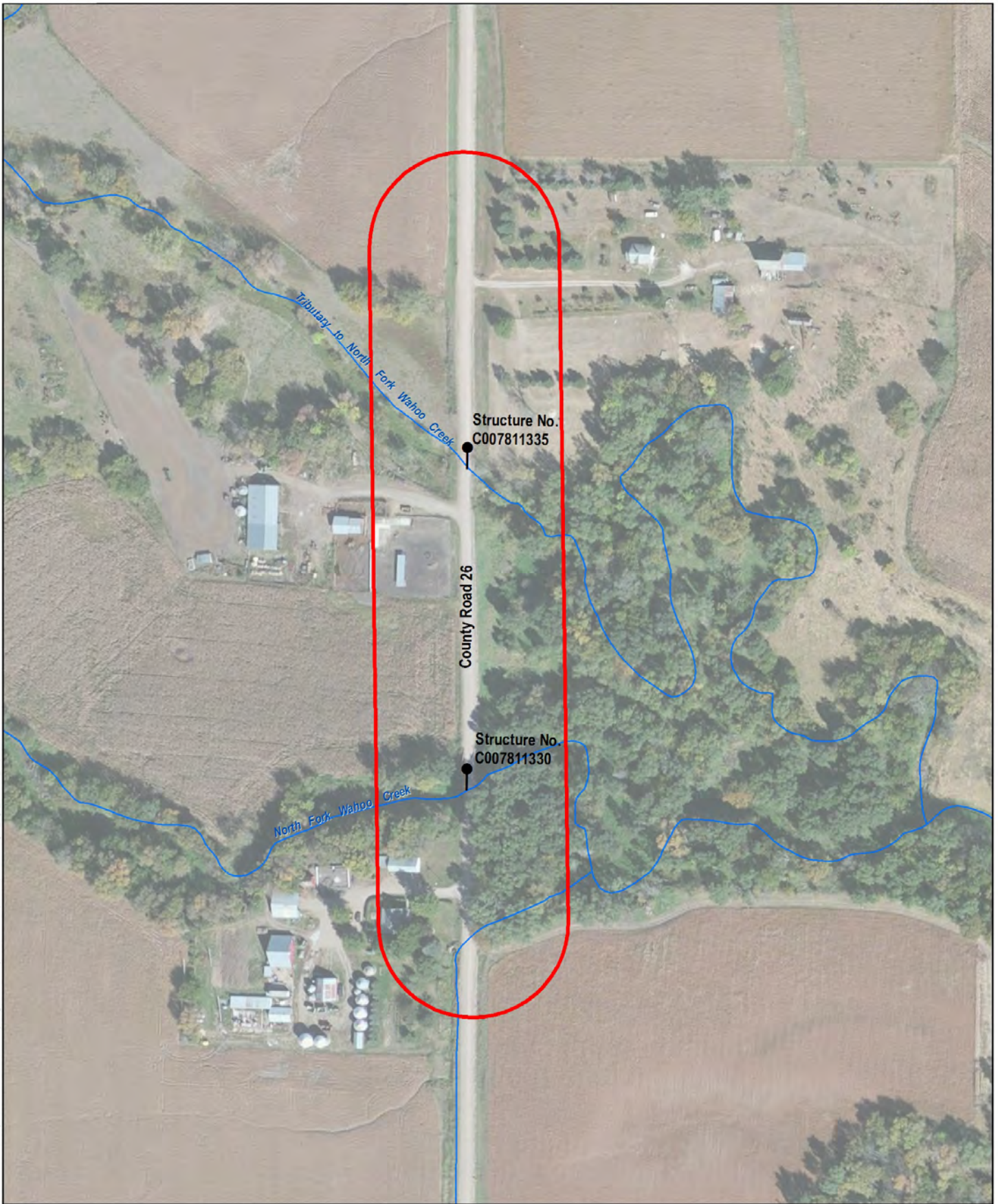
Project Location

Document Path: O:\Projects\15-228 Saunders County Prague South\Project GIS\Directory\ArcMap\Prague_South_Vicinity_Map.mxd



Figure 1
Vicinity Map
Prague South
Saunders County, Nebraska

Topographic Source: 2013 National Geographic Society, i-cubed, ESRI; USGS 1:100,000 scale metric Topographic Map, Fremont 1982



Document Path: C:\Projects\15-408-Saunders County Prague South\Project GIS Directory\Arc map\MXD\Figure_Fig2_Location_Map.mxd



Figure 2
Location Map
Prague South
Saunders County, Nebraska



Document Path: O:\Projects\15-428 Saunders County Prague South\Project\GIS\Director\Mc\map\DCI\Prague Detour Map.mxd



-  Project Location
-  Detour Route (Length = 5.8 miles)



Figure 3
Detour Route Map
Prague South
Saunders County, Nebraska